



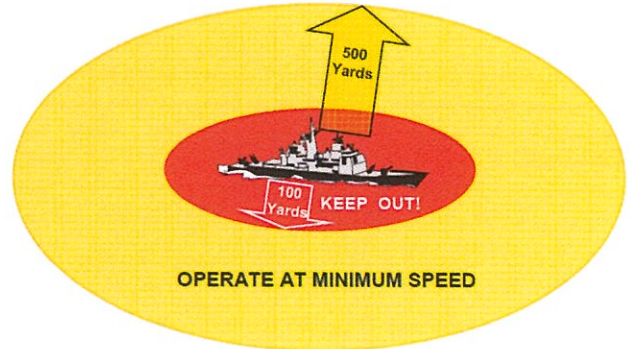
Marine Safety Information Bulletin

Commander
U.S. Coast Guard
Sector Delaware Bay
1 Washington Ave
Philadelphia, PA 19147

MSIB Number: 20-25
Contact: Waterways Management Staff
Phone: (206) 815-6688, Option 3
E-Mail: DelawareBayWWM@uscg.mil
Date: October 7, 2025

NAVY/MARINE CORPS HOMECOMING 250 NAVAL VESSEL PROTECTION ZONES

The U.S. Coast Guard Captain of the Port (COTP), Sector Delaware Bay, reminds the public that Navy/Marine Corps Homecoming 250 will be taking place on October 9, 2025, through October 16, 2025. Several Naval Vessels will be transiting and mooring in Philadelphia, PA, Camden, NJ, and Gloucester, NJ. A Naval Vessel Protection Zone (NVPZ) is currently in effect for the duration of their visit. As described in 33 CFR § 165.2030, a NVPZ is a 500-yard security zone surrounding large naval vessels.



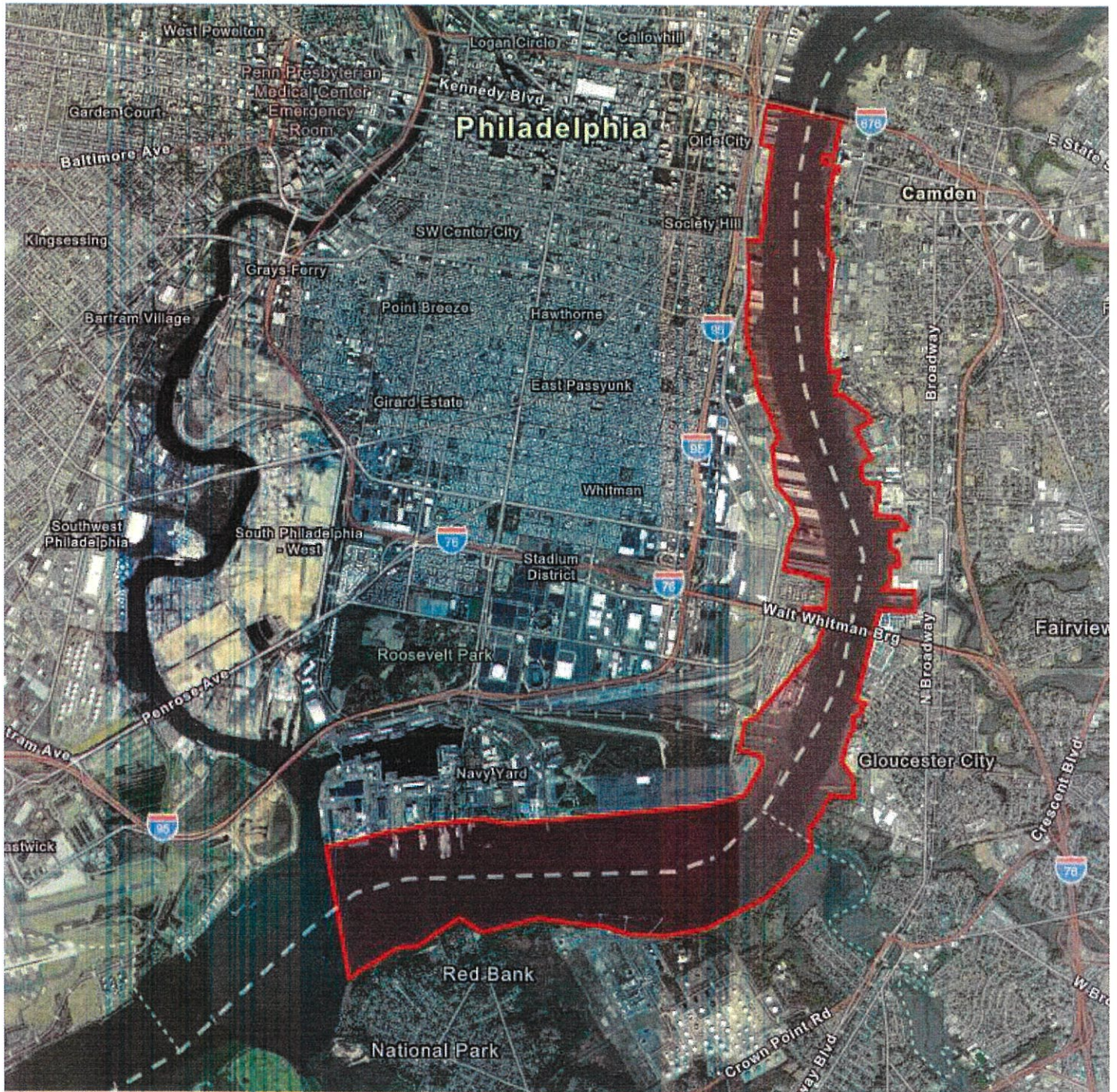
Vessels desiring to transit the Delaware River in Philadelphia, PA from October 9, 2025, through October 16, 2025, are required to contact the Sector Delaware Bay Command Center, via phone at (833) 453-1007, a minimum of **one hour** prior to arriving at the designated area that encompasses all of the NVPZs. The designated area is bounded by the Philadelphia Navy Yard on the south end and the Benjamin Franklin Bridge on the north end. Please see the enclosure for map that details the designated area.

When operating within a NVPZ, all vessels shall operate at the minimum speed necessary to maintain a safe course and shall proceed as directed by the Coast Guard, Senior Naval Officer Present in Command, or official patrol. No vessel or person is allowed within 100 yards of the protected vessels unless authorized by the Coast Guard, Senior Naval Officer Present in Command, or official patrol. Violations of the NVPZ may be subject to felony criminal charges or civil penalties.

COAST GUARD POINT OF CONTACT FOR THIS NOTICE

The Sector Delaware Bay Command Center may be reached on VHF radio channel 16 or (833) 453-1007.

K.F. HIGGINS-BLOOM
Captain, U.S. Coast Guard
Captain of the Port, Sector Delaware Bay



This release has been issued for public information and notification purposes only.